



AVH8516

8-Bay Storage
Event Pop-up / Preview
Alarm Scenario Customization
16CH 5MP Real-Time Video Recording

8-Bay 16CH 5MP Real-time H.265 NVR

Features

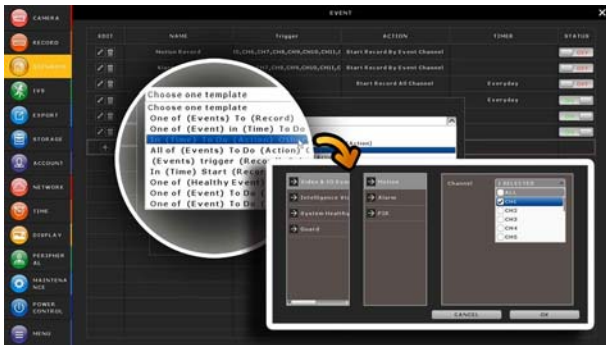
H.265 Compression Technology

With this compression technology, the recording capacity is greatly enhanced as well as bandwidth saving for better efficiency and performance than the systems employing other compression formats



Alarm Scenario Customization

“Scenario” is a new feature allowing you to customize a series of actions which will be run automatically after the specified event occurs. There are several scenario templates for you to choose when and what to do after a specific event occurs.



Push Video & Push Status - Active Event Notification with EagleEyes App

- Push Video to send instant notifications for an alarm event when an alarm device is connected to the DVR.
- Push Status to send instant notifications for system events, such as video loss or HDD data removal.

8-bay Storage Capacity

To solve the large storage requirement of 4K2K recording, this NVR supports up to 8 hard disks to keep high quality H.265 video data without overwriting data so quickly. A power-saving mechanism is also adopted to reduce power consumption.

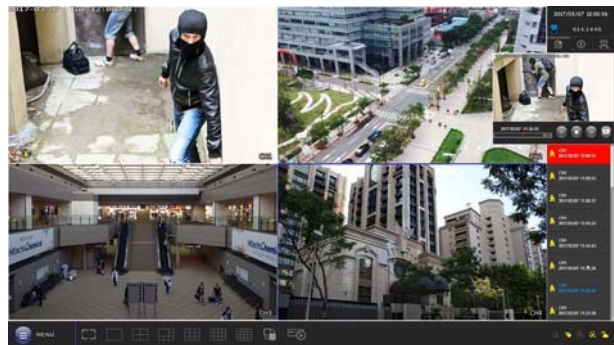
IVS

IVS (Intelligent Video System) could be used to set a virtual detection line for people counting, virtual fence, and one-way pass.

It's the advanced usage for motion detection to not only record but also summarize the detection data for further analysis.

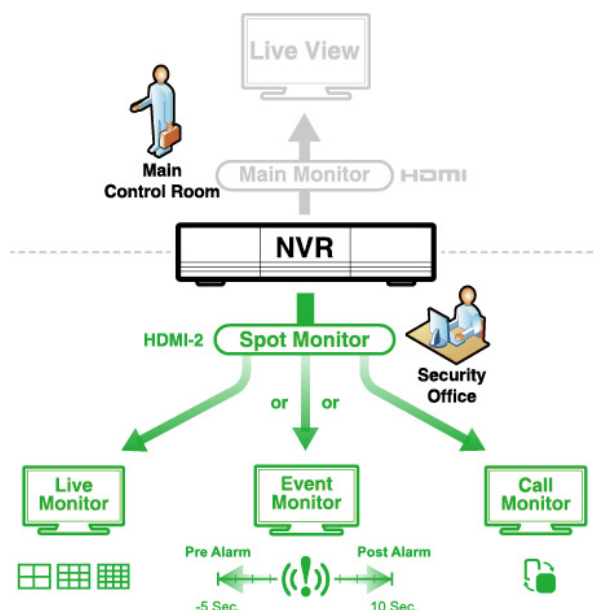
Event Pop-up / Preview

All events are listed on the right panel with corresponding event icons for you to quickly recognize the event type. The most current one will flash to catch your attention. Click one event and you're able to preview the footage with pre-alarm images.



Spot Monitor

In addition to the main display via the main HDMI output, you can assign a secondary display to show live view, call monitor or event monitor.





Specifications*

Hardware		
Video Input	One LAN port (up to 16 IP cameras)	
Video Output	HDMI x 2 / VGA x 1 / Composite x 1	
Video Output Resolution	HDMI-1: Up to 3840 x 2160 (4K2K) HDMI-2 & VGA: Up to 1920 x 1080 (Full HD)	
Audio Output	YES (Line out / HDMI)	
Audio Input	YES (Mic in)	
Alarm I/O	Alarm out only	
HDD Storage**	Eight 6TB hard disks	
USB Ports	USB 3.0 x 1 / USB 2.0 x 2	
IR Remote Control	YES	
Ethernet	LAN port	1000Mbps
	Internet port	1000Mbps
Software		
Video Compression Format	H.265	
Audio Compression Format	G711	
Local / Remote Display Mode	16CH	
Local / Remote Playback Mode	16CH	
Local Single Channel Playback	YES	
Record Stream	Dual	
Recording Mode	Manual / Event / Alarm / Schedule	
Recording Throughput	Up to 480 IPS @ 2592 x 1944, Up to 300Mbps	
Pre-alarm Recording	YES	
Quick Search	Time / Event	
Event Notification	Push Video / Push Status / Video Mail / Message Mail	
Security	Multiple user access levels with password	
Remote Access	(1) Internet Explorer on Windows operating system (2) CMS Lite, 32CH CMS software for Windows operating system (3) EagleEyes on iOS & Android mobile devices	
Max. Online User	20	
Multicast	YES	
Seamless Recording	YES	
Smart Search	YES	
Spot Monitor Setup	Call Monitor / Event Monitor / Live Monitor (HDMI-2 only)	
Alarm Scenario Setup	YES	
Alarm Pop-up & Preview	YES	

Specifications*

General	
Power Source ($\pm 10\%$)	DC19V / 3.42A
Operating Temperature	10°C ~ 40°C (50°F ~ 104°F)
Operating Humidity	10% ~ 85%
Dimensions (mm)**	358mm(L) x 267mm(W) x 152mm(H)
Minimum PC Browsing Requirements	<ul style="list-style-type: none"> • Intel core i3 or higher, or equivalent AMD • 2GB RAM • AGP graphics card, Direct Draw, 32MB RAM • Windows 10, Windows 8, Windows 7, Windows Vista & Windows XP, DirectX 9.0 or later • Internet Explorer 7.x or later (Windows Edge not supported)
Optional Peripherals	Full HD Matrix (HDM02) / PTZ Joystick (AVX102)

*The specifications are subject to change without notice

** HDDs are optional.

*** Dimensional tolerance: $\pm 0.5\text{mm}$

Rear Panel

